



CITYBAC[®] 360

Closing the loop

SULO[®]

**OPTIMIZE
WITH STYLE
CITYBAC®
DESIGN**

The new eco design is a compelling response to constantly growing demand for low-impact solutions and better comfort during handling. It's good for the environment. Good for employee/loader and everyday users. Once you try this two-wheeled professional, you will not want to do without it.

**CLEAN,
GREEN
PRODUCTION**

All SULO production sites are certified according to ISO 14001. Our energy management system according to ISO 50001 is focused on the continuous improvement of energy efficiency. The requirements of the tests, which are regularly carried out by independent institutes, go far beyond those of EN 840 and guarantee the best quality, durability and safety of the bin.

**OPTIMIZED
TRANSPORT**

The geometry of the new bin generation was modified to use transport space up to 50 % better than previous products. At the same time, the carrier saves up to one tonne of weight for each transport, which means significantly less fuel consumption per kilometre.

**PRIMED
FOR COMFORT
AND THE
ENVIRONMENT**

The controlled reduction in bin weight helps reduce workloads for employee/loader and decrease maintenance costs. Logistics considerations are also weighed very carefully to reduce the products' carbon footprint during transport, in large part through better stacking performance.

**OUR
PRODUCTS
STAY
IN THE LOOP**

All SULO bins and components are 100 % recyclable. Our factories are equipped with recycled-plastic extruders so we can process post-consumer resources, greatly reducing fossil fuel consumption and the resulting CO² emissions. Our production processes meet all the criteria to recycle defective or worn-out HDPE bins into new, high-quality and visually appealing products. And so we close the loop.

**MADE OF
UP TO 100%
RECYCLED HDPE**

Environment or quality? Ideally, why not pick both? Our RAL-certified Citybac bins are made from at least 80 % certified recycled plastic that used to be something other than a bin in their previous lives. Perfectly designed geometries and state-of-the-art processes deliver the kind of **stability, reliability and durability that you have come to expect from SULO.**





OPTIMIZE WITH STYLE CITYBAC®

A LID

- The cover is fixed with the standard hinge pins which allows more standardization of the range of 2 wheels bin

B BODY

- New design: beading to give the container more stability

C REINFORCED HANDLE

- Improved durability when emptied by the collection truck
- Divided in two for the perfect handle for pushing/pulling

D SIDE GRIP

- Lateral gripping surfaces are with corrugated profile and simplify handling of the container from the side

E DRIP-OFF RIMS ON STACKING RIBS

- Drip-off rims are integrated on the stacking ribs to reduce rainwater ingress
- Avoidance of damage during storage is improving safety at work

F FOOT PEDAL

- Facilites the rolling of the product.
- Dimensions large enough for use with safety shoes

G WHEELS

- Diameter: 200 and 300 mm
- Axles: full or hollow
- Axles + Wheels 1,9 kg

Resumption of the F-shape design to improve the mechanical resistance of the tray. Consistency of range with the design of the Citybac® 240 L bin.

CIRCULAR ECO ► DESIGN



NATURALLY COLOURFUL

100% RECYCLED MATERIAL



GREY
RAL
7021
AT

ECO FRIENDLY

■ ■ ■ ■ ■

Bin bodies made of up to 100 % post-consumption recyclate. We are able to achieve an average share of 70 % domestic recyclate (packaging, caps) and 30 % nondomestic (bins, industrial scrap, pallets).

CIRCULAR ECO ► MATERIAL

Body also available in the colours



GREEN
RAL 6011 VJ



BROWN
RAL 8025MR



BLUE
RAL 5023 BN



YELLOW
RAL 1018 JA

Silent Lid

Noise reduction lid



The name says it all. Besides its modern look, this lid offers efficient noise reduction with a simple trick. Thanks to a larger plastic lip on the underside of the lid, the lid shuts more slowly, similarly to a parachute. This function reduces the noise produced upon closing by 20 %.

CIRCULAR ECO ► USAGE

Lid also available in the colours



RAL 7021



RAL 7011



RAL 6011



RAL 6009



RAL 8025



RAL 9010



RAL 7038



RAL 5015



RAL 5005



RAL 5023



PANTONE 5395C



RAL 3974GN



PANTONE 167 C



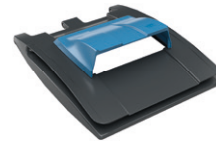
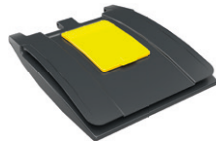
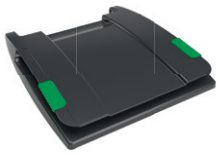
RAL 3000



RAL 3005



RAL 1018



Color clip compatibility

- Promotes the use of recycled materials
- simplify inventory management
- To allow reuse of the lid

Lid-in-Lid, small
Lid always in
Yellow RAL 1018

Round slot with
rubber rosette
Ø 150 mm, lock
or bolt required

Paper hood for
newspapers and
magazines in
Blue RAL 5023

Slot for
confidential
paper

Clip available in
the colours



SILENT CITY



SULO®



LIGHTER LOADS THROUGH WEIGHT REDUCTION

-0,6 KG

Total weight: 12.3 kg

-3,6 KG

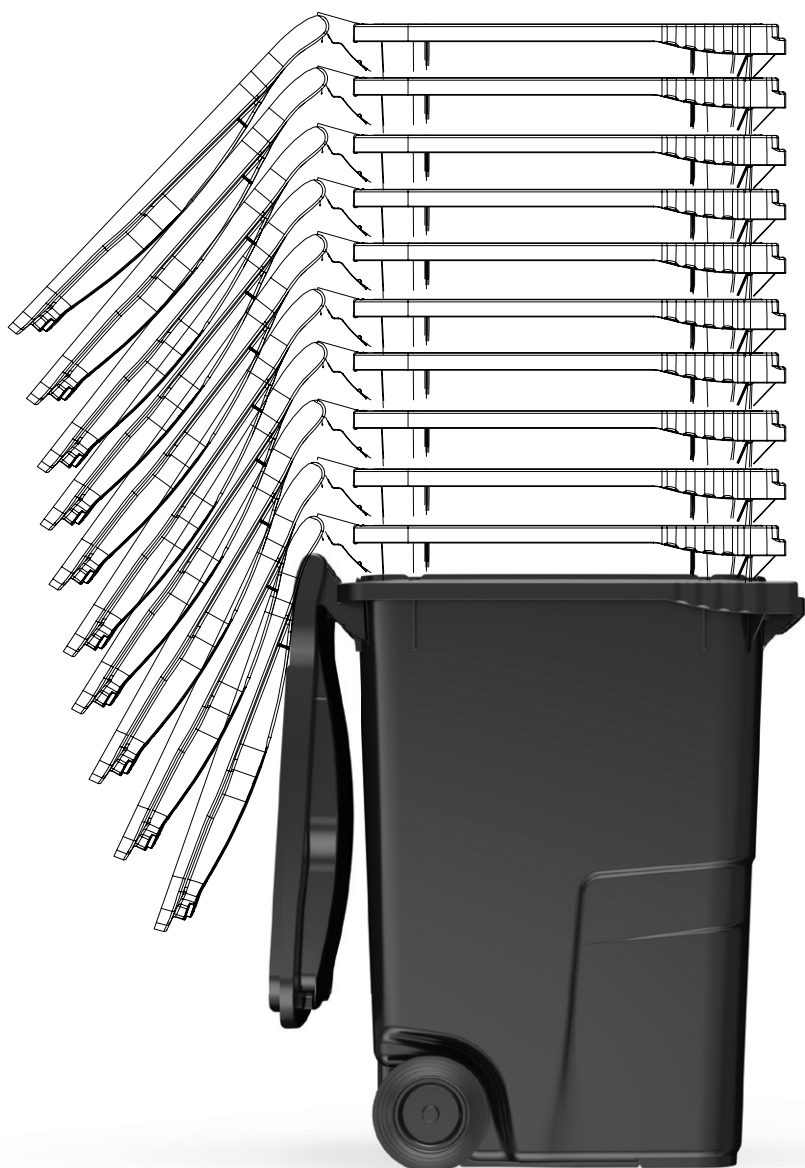
One employee/loader on a waste collection run empties around 600 bins per day. If up to 4.5 kg is cut from the bin weight, each employee will have to move 2.9 t less a day and 642 t less a year. That translates into up to 26 % less weight for the garbage collectors.

CIRCULAR ECO ► USAGE

Move and Use WEIGHT OPTIMIZATION

| PRODUCT | (kg) | +/- | |
|-----------------------------|-------|-------------|--------------|
| SULO CITYBAC 360 PREVIOUS | 17,20 | | |
| SULO CITYBAC 360 NEW | 12,30 | -4,9 | -28 % |

MAXIMUM STACKING



Delivery with wheels and axles in each bin to optimize packaging and transport.

Packing is optimized allowing savings of up to 50 % for a load of 80 m³. Significantly reduced manufacturing and transport impact.

CIRCULAR ECO ► TRANSPORT

+ UP TO 50 %

| | Bodies/ stack | Stacks / Truck | Bodies / Truck | Gap | % |
|-------------------|---------------|----------------|----------------|------|-----|
| CU ¹⁾ | 13 | 60 | 780 | +160 | 26% |
| CKD ²⁾ | 11 | 60 | 660 | +147 | 29% |
| SM ³⁾ | 11 | 44 | 484 | +164 | 51% |

¹⁾CU = Body only, body with possibility to put of the stack (CKD) the wheels and/or lids at the top

²⁾CKD = Completely knocked down, the lids are placed in the top bin, the rest of the lids are placed on the top

³⁾SM = Semi assembled, Any option that does not prevent from stacking can be mounted such as drillings & sound proofing

LESS IS MORE



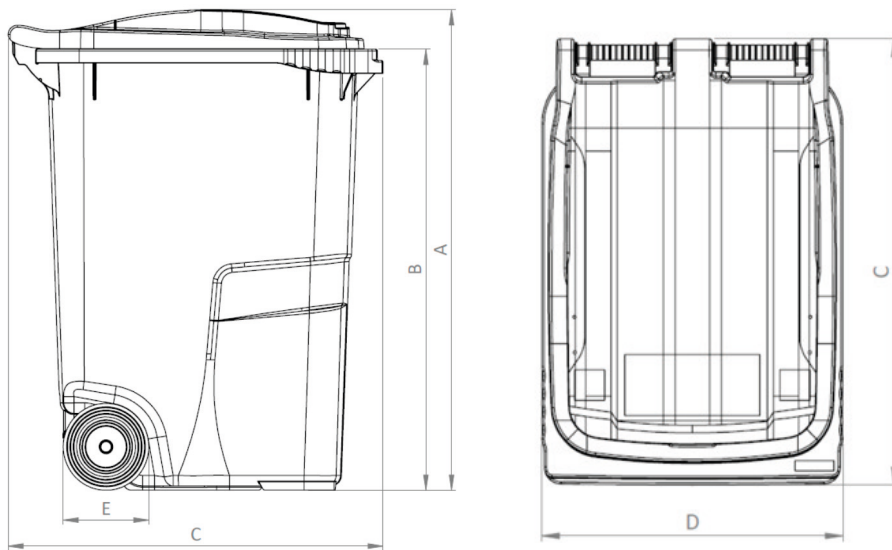
CO₂ savings

RECYCLED CONTENT

SULO's strategy revolves around recycling and aims to reduce greenhouse gas emissions and sustainably change how we generate value.

CIRCULAR ECO ► MATERIAL

PRODUCT DETAILS



Dimensions (mm)

| | | |
|----------|------------------|------|
| A | Height total ~ | 1105 |
| B | Comb height ~ | 1015 |
| C | Bin depth ~ | 877 |
| D | Width total ~ | 601 |
| E | Wheel diameter ~ | 200 |

Weights

| | |
|--------------------------|------|
| Nominal volume (L) | 360 |
| Empty weight (kg) ~ | 12,3 |
| Max. filling weight (kg) | 144 |
| ~EN 840 Norm | |
| Max. total weight (kg) ~ | 160 |



Product certified to the French NF
and GGAWB marks

CIRCULAR ECO ► PRODUCTION



Marking Areas

BODY AND LID

| | 1 BODY BACK | 2 BODY SIDE | 3 BODY FRONT | 4 BODY SIDE TOP | 5 LID MARKING | 6 LID PHOTOINJECTION |
|-------------------|-------------------|-------------------|--------------------|-----------------------|---------------------|----------------------------|
| A Width ~ | 250 | 250 | 530 | 530 | 220 | 240 |
| B Height ~ | 240 | 240 | 290 | 290 | 240 | 240 |

PRODUCT DETAILS

360 LITRE

LIFTING SYSTEM

DIN COMB



LID TYPE

Silent



LID SLOT SYSTEMS

Paper



Slot for confidential paper



Glass



Packaging



Household waste



Clips



NOISE REDUCTION

Plastic damper on wheels



LOCKING SYSTEMS

Manual lock



Automatic lock



Padlock device



360 LITRE

HANDLES

Side handle



WHEELS DIAMETER (HOLLOW OR SOLID AXLE)

ø 200 mm



ø 250 mm

ø 300 mm



LABELLING

Photo injection on the lid



Sticker



Embossing insert on the lid



Hot foil stamping



IDENTIFICATION

RFID Chip



Specific numbering



