

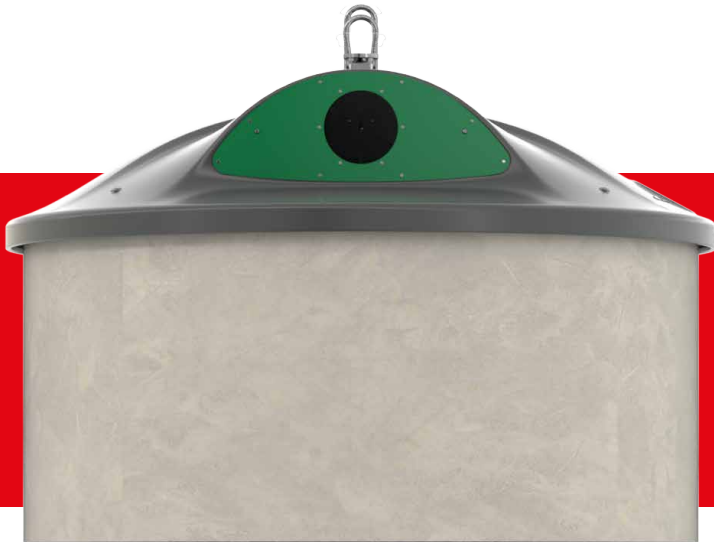
ICEBERG® SEMI SEMIMAX 1



SULO®

ROTOMOULDED EXCELLENCE

Semimax 1



DISABILITY ACCESS



VERTICAL



100 % MADE OF
RECYCLED LDPE



LEVEL
MEASUREMENT

The reworked system combines the best of technologies

- The redesigned SEMIMAX 1 combines the best features of all predecessor models
- The innovative design without corners or protrusion integrates perfectly into the landscape
- Low height for optimal sight and barrier-free accessibility
- Easy maintenance, the whole system can be demontaged in 15 minutes by 2 people
- The concrete container, which can hold 5 m³, allows to accommodate inner containers with different volumes
- The inner equipment can be flexibly designed depending on the amount and type of waste
- Speed lifting with Kinshofer or single hook
- The rotomoulded LDPE hood can be exchanged with the steel hood of SEMIMAX 2



LIFTING DEVICES



Single Hook



Double Hook



Kinshofer

SLOT SYSTEMS



Lid in grey
Round insertion
Ø 540 mm,



Lid in green
Round insertion
Ø 200 mm,



Lid in yellow
Rectangular
insertion
500 x 100 mm,



Lid in blue
Rectangular
insertion
400 x 160 mm,



Hood in green
(molded),
round insertion
Ø 200 mm



Hood in yellow
(molded),
rectangular insertion
500 x 100 mm



Hood in blue
(molded),
rectangular insertion
400 x 160 mm



Hood in grey
(screwed,
with lamellas),
rectangular insertion,
410 x 370 mm



Hood in green
(screwed),
round insertion
Ø 200 mm



Hood in yellow
(screwed),
rectangular insertion
500 x 100 mm



Hood in blue
(screwed),
rectangular insertion
400 x 160 mm

COLOURS

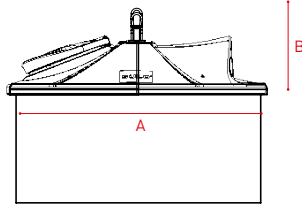
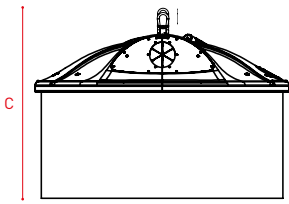


Trafficgrey
RAL 7043



Cool Grey
Pantone Cool Grey 6c

TECHNICAL DATA*



Semimax 1

Dimensions ~ (mm)*

- A Diameter Dome
- B Height Dome
- C Height from the ground

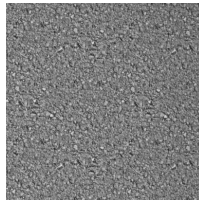
Volumes*

2000	Useful Volumes 4 m ³ ~ (m ³)	3,96 - 3,73
419	Useful Volumes ~ 5 m ³ (m ³)	4,93 -4,71
1258	Space requirements (m ²)	3,14

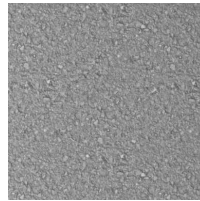
CONCRETE FINISH



Smooth concrete



Washed concrete



Sandblasted concrete



Natural imitation wood



Natural imitation wood grey



Diecast painted



Diecast raw

CHIP

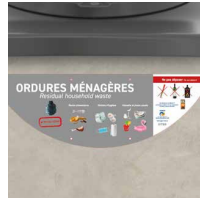


RFID Chip

PERSONALISATION



Sorting instruction on lid



Half moon sorting instruction on concrete tub or metal plate A3 size for stickers



Sorting instruction on concrete shaft/lining, Format - rectangular, 460 x 337 mm

Aludibond, laminated with Digital print

TECHNICAL INFORMATION*

SEMIMAX 1

TECHNICAL SPECIFICATIONS

Dimensions Dome	Ø 2000 mm, Height: 419 mm
Height Concrete above the ground	839
Diameter concrete / ground diameter	1900
Height from the ground	1258
Useful Volumes	4m ³ : 3,96 - 3,73 / 5m ³ : 4,93 - 4,71
Weight Dome	Changes with the fraction
Maximum weight	Changes with the fraction
Lifting Device	1-hook, 2-hook, Kinshofer

INSTALLATION

Space requirements	3.14 m ²
Transport	5 per Truck

HANDLING, COMFORT AND FLEXIBILITY

Reduce mobility	▪
Sound-proofing	for Glass 108 db no sound insulation 93 db Sound insulation bottom flaps + side walls + domes 88 db Sound insulation bottom flaps + side walls + flaps + dome

EMPTYING

Number of operators	‡
Duration of emptying	2-3 min
Emptying system according prehension grip	Single flap, double flap

SERVICE

Pay as you throw billing	▪
Access Control	optional for double drum
Level Measurement	▪

SLOT SYSTEMS

Lid in grey	Round insertion Ø 540 mm
Lid in green	Round insertion Ø 200 mm
Lid in yellow	Rectangular insertion 500 x 100 mm
Lid in blue	Rectangular insertion 400 x 160 mm
Hood in green (shaped)	Round insertion Ø 200 mm
Hood in yellow (shaped)	Rectangular insertion 500 x 100 mm
Hood in blue (shaped)	Rectangular insertion 400 x 160 mm
Hood in grey (screwed with lamellas)	Rectangular insertion 410 x 370 mm
Hood in green (screwed)	Round insertion Ø 200 mm
Hood in yellow (screwed)	Rectangular insertion 500 x 100 mm
Hood in blue (screwed)	Rectangular insertion 400 x 160 mm

sulo.com

DATA-ICEBERGSEMI-SEMIMAX-1-EN-1-2-110823

SULO[®]