

ICEBERG® SEMI SEMIMAX 2



SULO®

NEW GENERATION WITH SOLID ADVANTAGES

Semimax 2



DISABILITY ACCESS



VERTICAL



LEVEL
MEASUREMENT

The innovative sorting system with a steel hood

- **Maximum aesthetics**
the innovative puristic design without corners or protrusion integrates perfectly into the landscape
- **Maximum durability**
made out of 3 mm steel sheets, excellence surface quality due to manufacturing process, coated by hot dip galvanizing, shockproof, fire-resistant due to MO standard, corrosion protected
- **Maximum modularity**
2 versions of the hood, 2 versions of insert systems, which can be changed anytime, 5 possible waste fractions mean that you have plenty of possibilities of configuration, plus: hood can be exchanged with the rotomoulded hood of Semimax 2
- **Maximum ease of handling and maintenance**
- **Maximum accessibility**
- **Maximum resilience**



LIFTING DEVICES



Single Hook



Double Hook



Kinshofer

SLOT SYSTEMS



Lid in grey,
Round insertion
Ø 500 mm



Lid in green,
Round insertion
Ø 200 mm



Lid in yellow,
Rectangular
insertation
500 x 200 mm



Lid in blue RAL 5015,
Rectangular
insertation
550 x 110 mm



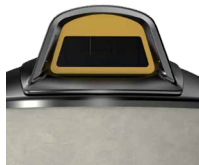
Lid in blue RAL 5005,
Rectangular
insertation
550 x 110 mm



Hood in grey,
Rectangular
insertation (lamellas)
500 x 380 mm



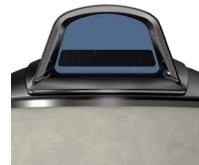
Hood in green,
Round insertion
Ø 200 mm



Hood in yellow,
Rectangular
insertation
500 x 200 mm



Hood in blue
RAL 5015,
Rectangular
insertation
500 x 100 mm



Hood in blue
RAL 5005,
Rectangular
insertation
600 x 110 mm

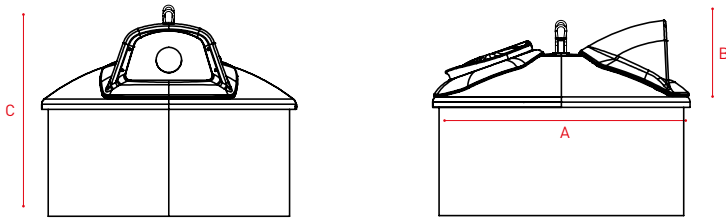
COLOURS **



Anthracite Grey
RAL 7016

** all colours on demand

TECHNICAL DATA*



Semimax 2

Dimensions ~ (mm)*

- A Diameter Dome
- B Height Dome
- C Height from the ground

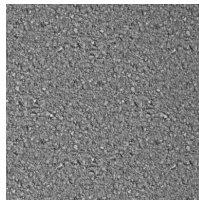
Volumes*

2000	Useful Volumes 4 m ³ - (m ³)	3,96 - 3,73
419	Useful Volumes ~ 5 m ³ (m ³)	4,93 -4,71
1258	Space requirements (m ²)	3,14

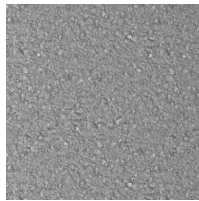
CONCRETE FINISH



Smooth concrete



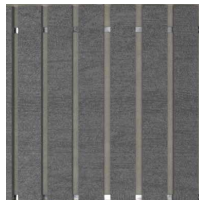
Washed concrete



Sandblasted concrete



Natural imitation wood



Natural imitation wood grey



Diecast painted



Diecast raw

PERSONALISIERUNG



Sorting instruction on lid



Sorting instruction on concrete shaft/lining, Format - crescent



Sorting instruction on concrete shaft/lining, Format -rectangular, 460 x 337 mm

Aludibond, laminated with Digital print

TECHNICAL INFORMATION*

SEMIMAX 2

TECHNICAL SPECIFICATIONS

Dimensions Dome	Ø 2000 mm, Height: 419 mm
Height Concrete above the ground	839
Diameter concrete / ground diameter	1900
Height from the ground	1258
Useful Volumes	4 m ³ : 3,96 - 3,73, 5 m ³ : 4,93 -4,71
Weight Dome	Changes with the fraction
Maximum weighth	Changes with the fraction
Lifting Device	1-hook, 2-hook, Kinshofer

INSTALLATION

Space requirements	3,14
Transport	5 per Truck

HANDLING, COMFORT AND FLEXIBILITY

Reduce mobility	▪
Sound-proofing	for Glass 108 db no sound insulation 93 db Sound insulation bottom flaps + side walls + domes 88 db Sound insulation bottom flaps + side walls + flaps + dome

EMPTYING

Number of operators	†
Duration of emptying	2-3 min
Emptying system according prehension grip	Single flap, double flap

SERVICE

Pay as you throw billing	▪
Access Control	▪
Level Measurement	▪

SLOT SYSTEM

Lid in grey	Round insertion Ø 500 mm
Lid in green	Round insertion Ø 200 mm
Lid in yellow	Rectangular insertion 500 x 200 mm
Lid in blue RAL 5015	Rectangular insertion 550 x 110 mm
Lid in blue RAL 5005	Rectangular insertion 550 x 110 mm
Hood in grey	Rectangular insertion 500 x 380 mm
Hood in green	Round insertion Ø 200 mm
Hood in yellow	Rectangular insertion 500 x 200 mm
Hood in blue RAL 5015	Rectangular insertion 500 x 100 mm
Hood in blue RAL 5005	Rectangular insertion 600 x 110 mm

sulo.com

DATA-ICEBERGSEMI-SEMIMAX-2-EN-1-2-140823

SULO®