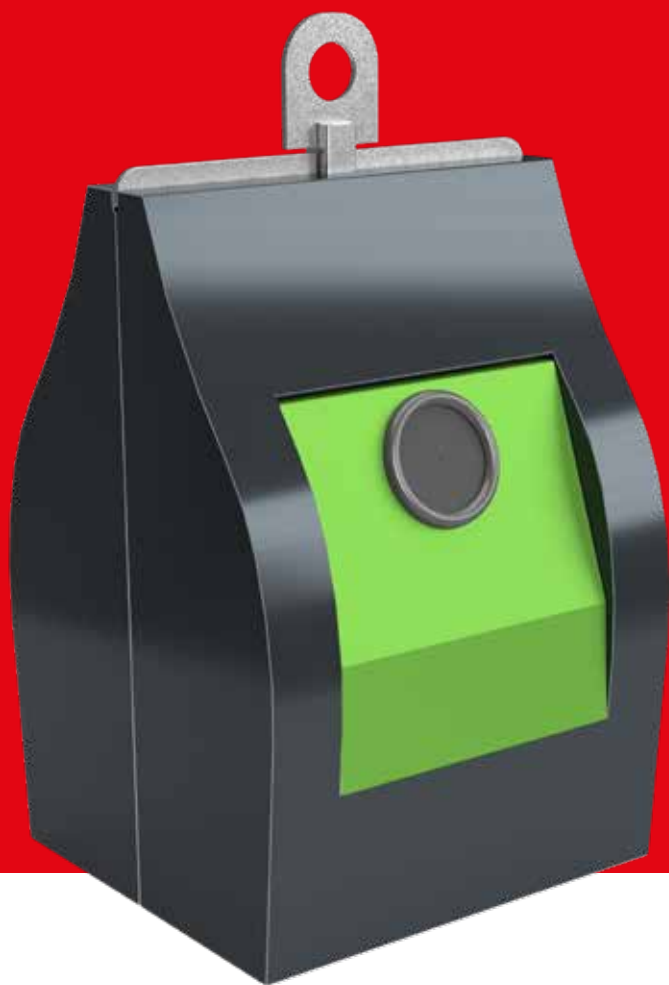


# ICEBERG®

## MAX4



**SULO®**

Sweeping design, robust quality

# ICEBERG® MAX4



VERTICAL



DISABILITY ACCESS



ACCESS CONTROL  
For the Filling chute and Double drum



FILL LEVEL MEASUREMENT

## Harmonises perfectly with modern architecture

**ICEBERG® MAX4** provides an attractive design alternative and, like the other deposit columns from the Iceberg series, integrates harmoniously into cityscapes that are characterised by modern architecture. 2 different shapes are designed for the **ICEBERG® MAX4**. The special designed shaped for the double drum is for the easier throwing-in of waste sacs. The slot system can be configured with high-quality equipment options like paper stainless-steel swing or digital access control without any problems.

# BASIC CONFIGURATION

## LIFTING DEVICE

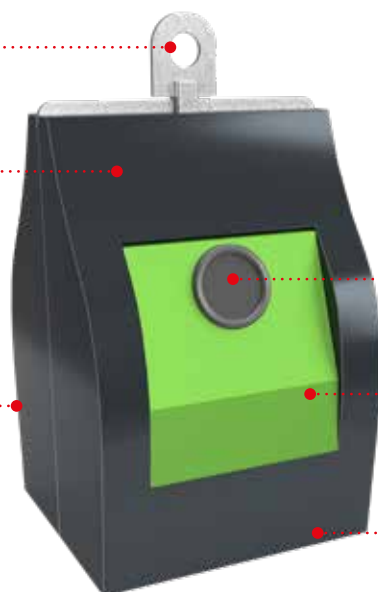
- 1-Hook

## PILLAR

- Dimensions  
L 770 mm D 800 mm H 1.210 mm  
L 882 mm D 800 mm H 1.210 mm  
(double drum version)
- Steel paint in anthracite grey matt RAL 7016

## INSPECTION DOOR

- At the rear
- Rectangular: 550 x 700 mm
- Locked by captive key, half moon key, flat key or triangular key



## SLOT SYSTEM

- Glass, throw-in width 200 mm

## FRONT PANEL

- Steel paint in yellow green RAL 6018

## POSITION

- Centralized on the pedestrian platform

## +OPTION

### LIFTING DEVICES



Kinshofer Flex

### SLOT SYSTEMS



Regular Waste Filling chute 110 L  
Stainless Steel



Regular Waste Double Drum 80 L  
Stainless Steel



Packaging, Paper - Rectangular slot



Foot pedal for filling chute and double drum



Big user flap for Glass and Packaging

## COLOURS

### Pillar



Gray aluminum  
RAL 9007

### Front panel - fraction labelling



Glas  
RAL 6018



Packaging  
RAL 1018



Paper  
RAL 5010

## CUSTOMIZATION



Writing

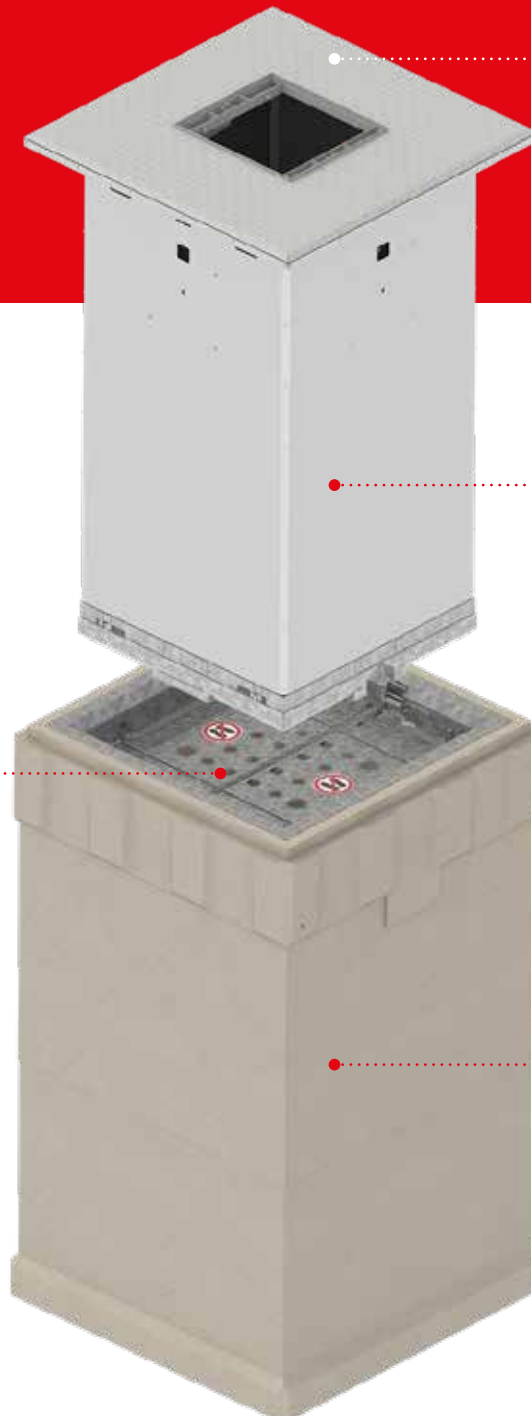


Sorting instructions

# Quality on a Grand Scale

## ICEBERG® NOVUM

### BASIC CONFIGURATION



#### PEDESTRIAN PLATFORM

- Bulp Plate 30°
- Crowning 1,5°

#### INNER CONTAINER

- Filling volume 3,4 or 5 m<sup>3</sup>  
(Glass up to max. 4m<sup>3</sup>)
- Riveted
- Noise reduction for Glass (option)

#### SAFETY MECHANISM

- Securoflap safety mechanism
- Load capacity 150 kg  
(acc. to DIN EN 13071)
- Easy removal for maintenance or repairs

#### CONCRETE CONTAINER

- 5m<sup>3</sup>
- B 1725 x W 1725 x D 2940 mm
- Monolithically, cast in one piece, water resistant
- Pump sump

## CONCRETE CONTAINER

- Volume: 4 m<sup>3</sup> and 5 m<sup>3</sup>
- Concrete container dimensions:
  - 4 m<sup>3</sup> H 2,425 x W 1,725 x L 1,725 mm
  - 5 m<sup>3</sup> H 2,703 x W 1,725 x L 1,725 mm
- Seamless positioning of the underground systems possible
- Due to the depressions in the concrete crowns, the surface water can run off better when the concrete tanks are placed next to each other
- 4 pump sumps: For easier pumping of water out of the concrete container
- Made of 100% waterproof concrete
- Quality: C45/55
- If the groundwater level is too high, the concrete container is also available with buoyancy protection

4 m<sup>3</sup>5 m<sup>3</sup>

SECUROFLAP

## SAFETY MECHANISM

- When the inner container is removed, springs ensure that 2 flaps of the Securoflap safety system are extended and automatically locked
- The load capacity is 150kg (according to DIN EN 13071)
- Due to the modular design and the very good access, the safety technology can be easily maintained and repaired

## Speaking of location

Even for the conversion of an existing residential complex or old buildings with front gardens, there is usually always a suitable place for the **SULO ICEBERG®** underground system. The location should be no further than 8 m from the exit road and have 9 m of free airspace above it. After clarification, we implement the installation quickly and reliably



# Quality on a Grand Scale

## ICEBERG® NOVUM



### INNER CONTAINER

- Volume: 3 m<sup>3</sup>, 4 m<sup>3</sup> and 5 m<sup>3</sup>
- Inner container dimensions:
  - 3 m<sup>3</sup> H 1,691 x W 1,324 x L 1,324 mm
  - 4 m<sup>3</sup> H 2,251 x W 1,324 x L 1,324 mm
  - 5 m<sup>3</sup> H 2,811 x W 1,324 x L 1,324 mm
- Galvanized sheet metal inner container
- Side walls are riveted together
- Easy to maintain: chains can be released from the outside, sub frame and bottom flap can be removed from the outside
- Higher volume of bottom flaps to store more liquid coming from the waste
- Serviceability: Less spare parts are needed
- There is no Yoke-Traverse through the waste, which could block



### OPENING SYSTEM

- Yoke system: Bottom flaps are opened via yoke, advantage: the crossbars actively press the bottom flaps open, bottom flaps are opened up to 90° by the yoke
- Fixed stop: To open the container, it is attached to a hook above the waste disposal vehicle. This unlocks the bottom flap and the waste is emptied into the vehicle



**FIXED STOP**



**2-FLAP OPENING**



## PEDESTRIAN PLATFORM

### SURFACE-MOUNTED

- Platform rests on the ground
- **Standard version:** easy-to-clean, non-slip bulb plate
- **Optional:** pavement platform with recess, this can be provided with rubber inlay for fall and noise protection or with paving stones for discreet integration into the street scenery

### FLUSH-MOUNTED

- Platform is integrated flush with the floor, thus no trip hazard
- **Standard version:** easy to clean, non-slip bulb plate, rainwater runs off well due to 1.5° crowning
- **Optional:** pavement platform with recess, this can be provided with rubber inlay for fall and noise protection or with paving stones for discreet integration into the street scene



Bulb plate 30°



Flush-Mounted 30°



Bulb plate 90°



Flush-Mounted 90°

# TECHNICAL INFORMATION

## ICEBERG® MAX4

### PILLAR

Width (mm)	800
Height (mm)	800
Positionnement	centralized
Material	Painted steel
Colors	RAL 7016 Anthracite grey RAL 9007 Grey aluminium
Others colors	On demand
Finishing	smooth / hammered
Colours front panel - fraction labelling	RAL 6018 Yellow green / RAL 1018 Zinc Yellow

### FRACTIONS

Regular waste	Double drum 80 L / Filling chute 110 L
Packaging, Paper (rectangulaire) (mm)	150 x 400
Glass (mm)	Ø 200
Big user flap for Glas and Packaging (rectangulaire)	■
Service door	550 X 700
Lock for Service door	Half moon key / Captive Key / Triangular key / Flat key
Lifting devices	Single hook / Kinshofer Flex
Access control	Reservation Access control 13,56 Mhz

### OPTIONS

Soundproofing for glass	■
Foot pedal for regular waste	for Double drum and Filling chute
Level measurement	■
Disability access	■
Nudge	■

### COLLECTION

Number of operators	1
Duration of emptying	2 / 3 min
Pay as you throw billing	■
Standards	DIN EN 13071



**ICEBERG®**  
**NOVUM**
**CONCRETE SHAFT**

Volume (m³)	4	5
Width (mm)	1.725	1.725
Depth (mm)	1.725	1.725
Height (mm)	2.425	2.703
Buoyancy protection	■	■
Weight (kg)	4.250	5.000

**SAFETY DEVICE**

Securoflap	■	■
------------	---	---

**INNER CONTAINER**

Volume (m³)	3	4	5
Useful load (m³)	3,2	4	4,7
Width (mm)	1.342	1.342	1.342
Depth (mm)	1.342	1.342	1.342
Height (mm)	1.691	2.251	2.811
Weight (< kg)	<605	<635	<665
Assembling	Metal, Stainless Steel		
Matériaux	Metal, Stainless Steel		
Sound proofing		■	
Fill level measurement		■	

**PEDESTRIAN PLATFORM**

Bulb plate 30° surface-mounted		■	
Bulb plate 90° flush-mounted		■	
Recess 30° surface-mounted		■	
Recess 90° flush-mounted		■	
Rubber slab (with recess only)		Black 10 or 30 mm	
Nudge		■	

**COLLECTION**

Number of operators	1	1	1
Duration of emptying	2/3 min	2/3 min	2/3 min
Pay-as-you-throw	■	■	■
Normes	NF EN 13071	NF EN 13071	NF EN 13071

■ Standard

■ Option

Dimensions may vary due to production conditions. The specified empty weights are a rounded average based on the standard specifications. The real weight may be different as a result of production conditions and specifications.

[sulo.com](https://sulo.com)

DATA-ICEBERG-MAX-4-EN-1-0-060122

**SULO**<sup>®</sup>